



BRICKCAST

CONCRETE BLOCK PAVING

P.O. BOX 76801
 MARBLERAY
 4035
 12-14 TORVALE CRESCENT
 PHOENIX SOUTH
 INDUSTRIAL PARK

TEL: 031 507 5525
 031 5007159
 FAX: 031 507 7094
 Cell: 082 322 1492
 EMAIL: brickcast@brickcast.co.za
 WEBSITE: www.brickcast.co.za
 CK 19986760423



INTRODUCTION

Brickcast was founded in 1996 as a subsidiary to the Brickway Pavers Group. Currently **Brickcast Group** is a **LEVEL 1**, contributor under the Broad Based Economic Empowerment Act no. 53 of 2003, with a recognition level of **135%**. Our dynamic business offers range of professional services, from the manufacturing of a range of concrete products, to turnkey projects (which require the design, supply, installation and guaranteeing of our product), research and development of new products, in-house on site Certified testing laboratories, in-house maintenance and equipment development division and in-house delivery fleet, which is guaranteed to be of the highest quality. Our certification from the **South African Bureau of Standards** for the manufacture of **Concrete Paving bricks: SANS 1058-2012** and for the manufacture of **Concrete Masonry Products SANS 1058-2009**, with the implementation of ISO 9001:2008 is evidence of our commitment to quality in service delivery. Embracing the spirit of Ubuntu and promoting the principles of “Batho Pele”, TQM ensures mutual growth and benefits by solidifying long-term relationships with clients, peers and emerging companies, this being evident with our skills transfer initiatives where un-skilled community based projects and undertaken by ourselves and skilled paving installers are mentored and constantly empowered. Our services accommodate our culturally diverse society while competing at an international standard.

VISION

- To provide exemplary concrete products and the development of professional paving installers from experience and skills gained in the established market
- To be a proactive key role player in forging ties with the emerging market.
- To be innovative and keep abreast with technological advancement, by initiating the transformation or evolution of conventional methods of project and construction management into a progressively more efficient and effective approach, using cutting edge technology.



BACKGROUND

Brickcast Industries cc, trading as Brickcast Concrete Block Paving, being a subsidiary of Brickway Pavers. Brickway Pavers CC being established in 1986, with the director of Brickway Pavers being involved from 1965 in the installation of paving. Brickcast Group has within a period of time transcended the barrier from being paving installers to an established manufacturing company, respected for traditional business ethics, unrelenting professionalism and continually striving to improve the standards of quality in the industry. Our expertise has evolved from construction of paving and masonry products to manufacturing. Brickcast has the ability to perform at all levels without compromising a quality service.



PROFESSIONAL MEMBERSHIPS



Affiliation and accreditation to the following organization bares testament to our commitment in ensuring professional service delivery:



- Concrete Manufacturers Association (CMA)
- South African Bureau of Standards (SABS/SANS)

VOLUNTARY BODIES

- Department of Economic Affairs (South African Consumer Council) - Arbitration
- Durban Chamber of Commerce (DCC) - mentorship
- Ithala Bank – Emerging mentorship program – Blockmakers Initiative
- Progressive Business Forum (Platinum member) (PBF)
- Confederations of Employers Organizations

EXPERTISE **SABS CERTIFIED PRODUCTS**

- Turnkey project development, design, supply, install, maintain and guarantee
- Fast track product research and development – quick product implementation and sourcing
- In-house, on-site laboratories using the latest equipment and expertise at each manufacturing facility
- Skills transfer and development by using training programs and trained staff.



RESEARCH AND DEVELOPMENT

Brickcast employs the latest trends and market requirements to meet specific client’s needs. This is demonstrated time and time again, as is demonstrated when the client wanted a special thickness and shape of paver for the Ushaka Marine World development and the recycled “green” component washed exposed aggregate paver for the Dube City Project at King Shaka Airport. This is further demonstrated by the in-house mould product development workshop that is capable of producing specialised moulds be it plastic, polyurethane, fibreglass and metal moulds. Brickcast was the first producer in South Africa to experiment with large format pavers which is now a market leader. Brickcast also boasts using local skills, development of their own specialised production equipment rather than imported overseas



equipment while maintaining international standards and trends. Brickcast is committed to continuous human resource development to exceed escalating market demands.

QUALITY OBJECTIVES

- Taking full responsibility for quality throughout the internal and external processes within the scope of our business thereby meeting or superseding our clients' requirements
- Ensuring that we supply our customers with the best possible advice, products and service
- Ensuring that we manage the organization in such a manner as to enable us to achieve our quality objectives and targets thereby satisfying all stakeholders.
- Continually improve our effectiveness and efficiency through measurement, evaluation and client feedback
- Communicate effectively with our clients' and employees at all times.
- We further commit ourselves to the implementation and maintenance of a Quality Management System complying to ISO 9001:2008, and to the continual improvement of our business by the regular review of our Quality Management System and keeping abreast with the latest technology in our fields.
- Further improving the current SANS standards by providing continuous research and development of the current standards.

EMPLOYMENT POLICY & MISSION STATEMENT

- We strive to contribute directly to the transformation of South Africa by focusing on training and education to previously marginalized race groups.
- We endeavor to enhance our employee skills at all levels to ensure that our clients receive unparalleled service excellence. We shall ensure that our participation on projects is on a value added basis
- We aspire to support the transfer of skills to young emerging professionals by espousing the concept of "twinning" to achieve the transfer of skills.



BRICKCAST CODE OF CONDUCT

- Maintain the highest standard of integrity in all their business and personal dealings.
- Reject all improper business practices
- Not abuse the trust placed in them by employers.
- Not misuse opportunities arising in the course of their interaction for personal gain.
- Seek constantly to maintain and enhance the standards of competence



INTEGRATED SERVICE OFFER

The integrated service offer is the combination of construction project management, programme management, construction monitoring and supervision, multi project management, cost consulting and value engineering during the phases of a project. Integrating the services offer valuable advantage to our clients and also enhances our competitive edge in the market.

Integrated service offer provided the following advantages for the convenience of clients and managers:

- Reduced client administration
- Presents a single reference point
- Concise and unambiguous communication
- Effective and immediate decision making
- Quality can never be compromised
- A “one-stop” approach is available to clients aiming to execute complex projects

SUPPLY CHAIN MANAGEMENT

Brickcast has an in depth understanding of South African procurement policies in the private and public sectors. Our continuous involvement and experience in the industry has enhanced our ability to provide a quality concrete product on time. We also monitor contractor performance so that we may strive to improve contractor services and ensure that we always work with the best in the industry. Brickcast also adopts a strict policy of confidentiality and anti-corruption. We strongly believe in business ethics and condemn bribery and corruption. We believe in equality and transparency, always conducting business with integrity.

ENTERPRISE DEVELOPMENT

Brickcast has assisted and empowered various entities with resources, training and mentorship for the paving contractors and emerging block producers, Occupational Health & Safety, Construction, Accounting and Labour Only Contracting disciplines.

CORPORATE SOCIAL RESPONSIBILITY

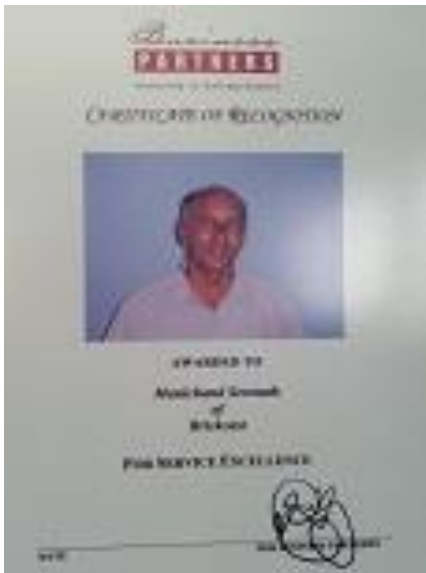
Brickcast believes that Corporate Social Responsibility is more than managing the reputation risk of the business. At Brickcast the belief is that CSR is about value creation to the business, employees and the various other stakeholders. Brickcast is committed to uplifting deserving charities/communities/individuals by giving back more than just monetary gifts; our most recent endeavour is for all staff and management of the company to participate in community work for charitable organizations such as orphanages and frail care centres for the aged. We believe people

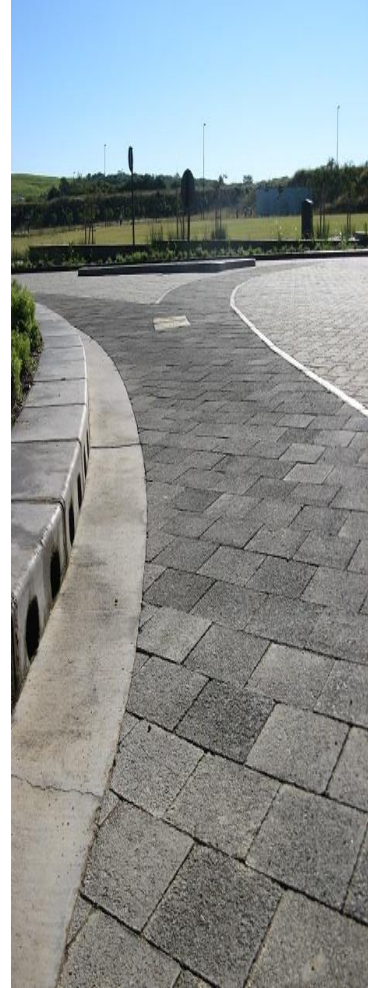
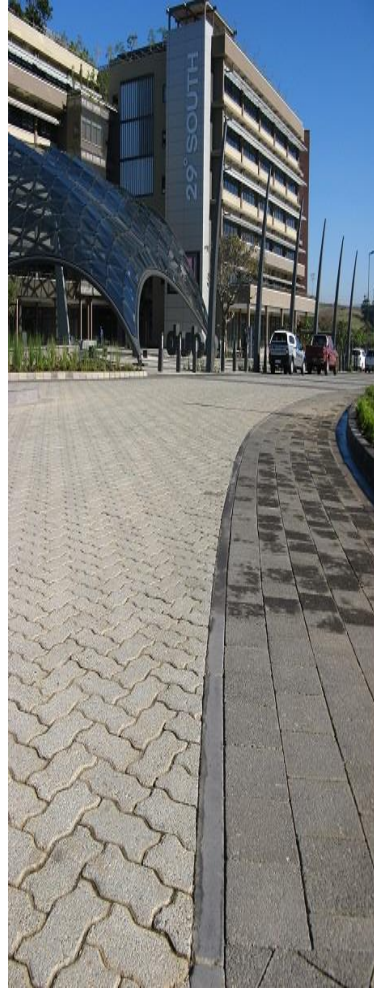




need more than just financial support; they also need human compassion, encouragement and reassurance that someone cares for them. Donations to various charities and NGOs’.

AWARDS





**DUBE CITY
2011-2012**

ACSA CORPORATE HEADQUATERS AT KING SHAKA INTERNATIONAL AIRPORT, DUBE CITY.

CONCRETE MAXI 90 ENGINEERED RECYLED GREEN BRICKS WERE SUPPLIED 1.2 MILLION UNITS

28000 m² (APPROXIMATELY 1.1 MILLION UNITS) WAS ALSO SUPPLIED TO THE ROADWAYS, PARKING AREAS, TURNING CIRCLES, SIDEWALKS AND PATHWAYS.

THIS PROJECT WON BRICKCAST THE COVETED CONCRETE MANUFACTURERS ASSOCIATION (C.M.A) AWARD FOR 2012 – 2013



USHAKA MARINE WORLD



MOSES MAHIBHDA STADIUM

BRICKCAST PRODUCTION FACILITIES



BRICKCAST FACTORY – PHOENIX SOUTH INDUSTRIAL PARK (TODAY BRIDGECITY) 1994



BRICKCAST 2012 – BRIDGECITY WITH NEW EXPANDED CAPACITY (PIC ON RIGHT)